

PART OF THE S.E.1/4, SEC. 34, T.6N., R.1W., S.L.B. & M.

114

EAST BENCH AT 29TH.

A PRUD

LOTS 5-6, 20-26 AMD. LOTS 1-4 & COMMON AREA, AMD. LOTS 16,17,26 & COMMON AREA D

IN OGDEN CITY
SCALE 1" = 60'

TAXING UNIT: 183

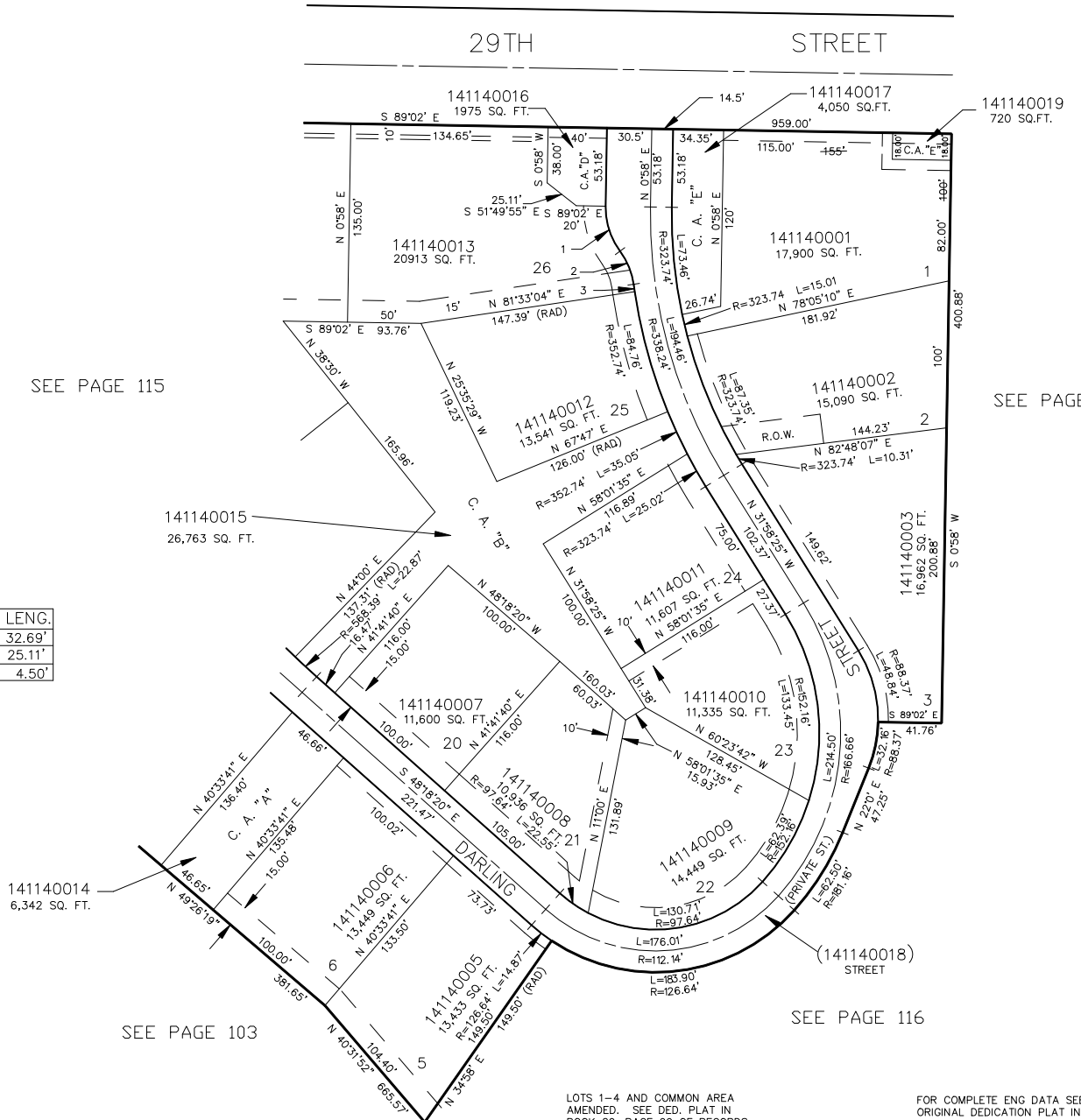
SEE PAGE 79

SEE PAGE 115

SEE PAGE 103

CURVE DATA

CURVE	RAD.	LENG.
1	50.00'	32.69'
2	50.00'	25.11'
3	352.74'	4.50'



7' UTILITY & DRAINAGE EASEMENTS EACH SIDE OF PROPERTY LINES AS INDICATED BY DASHED LINES EXCEPT AS OTHERWISE SHOWN.

LOTS 1-4 AND COMMON AREA AMENDED. SEE DED. PLAT IN BOOK 29, PAGE 99 OF RECORDS.

FOR COMPLETE ENG DATA SEE ORIGINAL DEDICATION PLAT IN BOOK 25, PAGE 35 OF RECORDS.

ESMT. VACATED 9-10-87 (1529 - 1412)

LOTS 16,17,26 AND COMMON AREA D AMENDED. SEE DED. PLAT IN BOOK 38, PAGE 61 OF RECORDS.

AMD. LOT 1, OF THE AMD. PLAT OF LOTS 1-4 AND COMMON AREA E SEE DED. BOOK 42, PAGE 26 RECORDS.

AMD. LOTS 16,17,26 SEE DED. PLAT IN BOOK 42, PAGE 27 OF RECORDS.

JPS 12-93